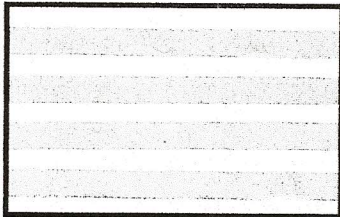




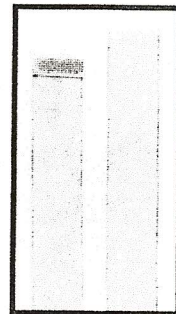
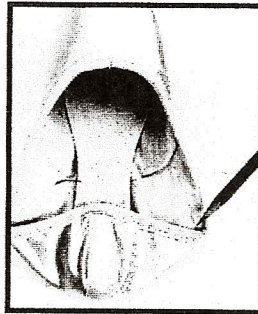
# Stitch Kit™

Sewing instructions for pointe shoes

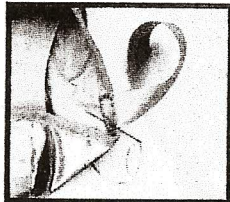


1. Cut length of ribbon (2½ yds.) into four equal pieces—approximately 22 inches long.

2. To find the proper placement for the ribbons, fold the heel of the pointe shoe down until it lies flat against the insole. Using a pencil, place a mark where the shoe creases.



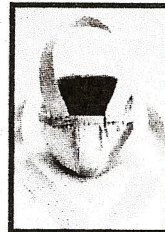
3. Fold the end of the ribbon, matte sides together, under 1/4 inch. Fold again 1/4 inch. This will reinforce the ribbon when sewing.



4. Position the ribbon so that the back edge of the folded end is on the pencil mark. (Ribbon may also be angled if preferred) Using a whipstitch, sew down one side of the ribbon, across the bottom, and up the other side. Then, using a running stitch, sew across the top edge of the casing being careful to avoid the drawstring.

## Sewing Instructions for Elastic

*Bunheads recommends sewing the elastic on the outside of the shoe to prevent blisters. However, if you prefer a cleaner look, it can be sewn on the inside.*



With shoe on, put foot in flat position. To measure elastic, hold one end at the back of the shoe on one side of the seam. Stretch the other end of elastic across the ankle to the other side of the shoe. Cut, allowing approximately 1/2 inch on each end for sewing. Sew as indicated in step 4.